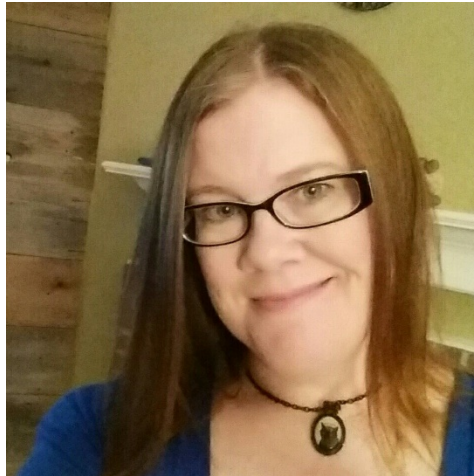


Rena Lawrence, Interim Director, Log Cabin Village (Fort Worth)



Rena Lawrence currently serves as a site supervisor for Log Cabin Village and the Van Zandt Cottage in Fort Worth, Texas. Rena is well-versed in most aspects of museum operation and has served in many capacities including (but not limited to) site and collections management, education and volunteers, budgets and strategic planning, exhibit design and installation, facility renovations, marketing/social media, archives, and museum store operation. With more than 22 years in the field, she brings experience in varying roles at the Museum of Nebraska History, St. Joseph Museum, Shoal Creek Living History Museum, and Legends of the Game Baseball Museum and Learning Center as well as other independent consulting projects. In addition, she has also served as a grants coordinator for the University of Kansas Medical Center's Occupational Therapy Education Department.

Rena is a firm believer in the Texas Association of Museums and its mission, having lent her support and leadership over the past 15 years in the Texas Association of Museum Educators (receiving Educator of the Year in 2010), Collections Managers Committee, Diversity Committee, Communications Committee, Program Committee, Teller and Scholarship Committees, Nominating Committee, Local Arrangements Committee, and Northeast Texas Museums Association.

Rena holds a Master of Arts Degree in Museum Studies (minor in Curriculum and Instruction) from the University of Nebraska-Lincoln and a Bachelor of Arts Degree in History (minors in Psychology and Classical Studies) from Truman State University (Kirksville, MO). She resides in Fort Worth with her husband and son. She enjoys reading, walking, creative projects, a good craft beer, and hearty, genuine, belly laughs.